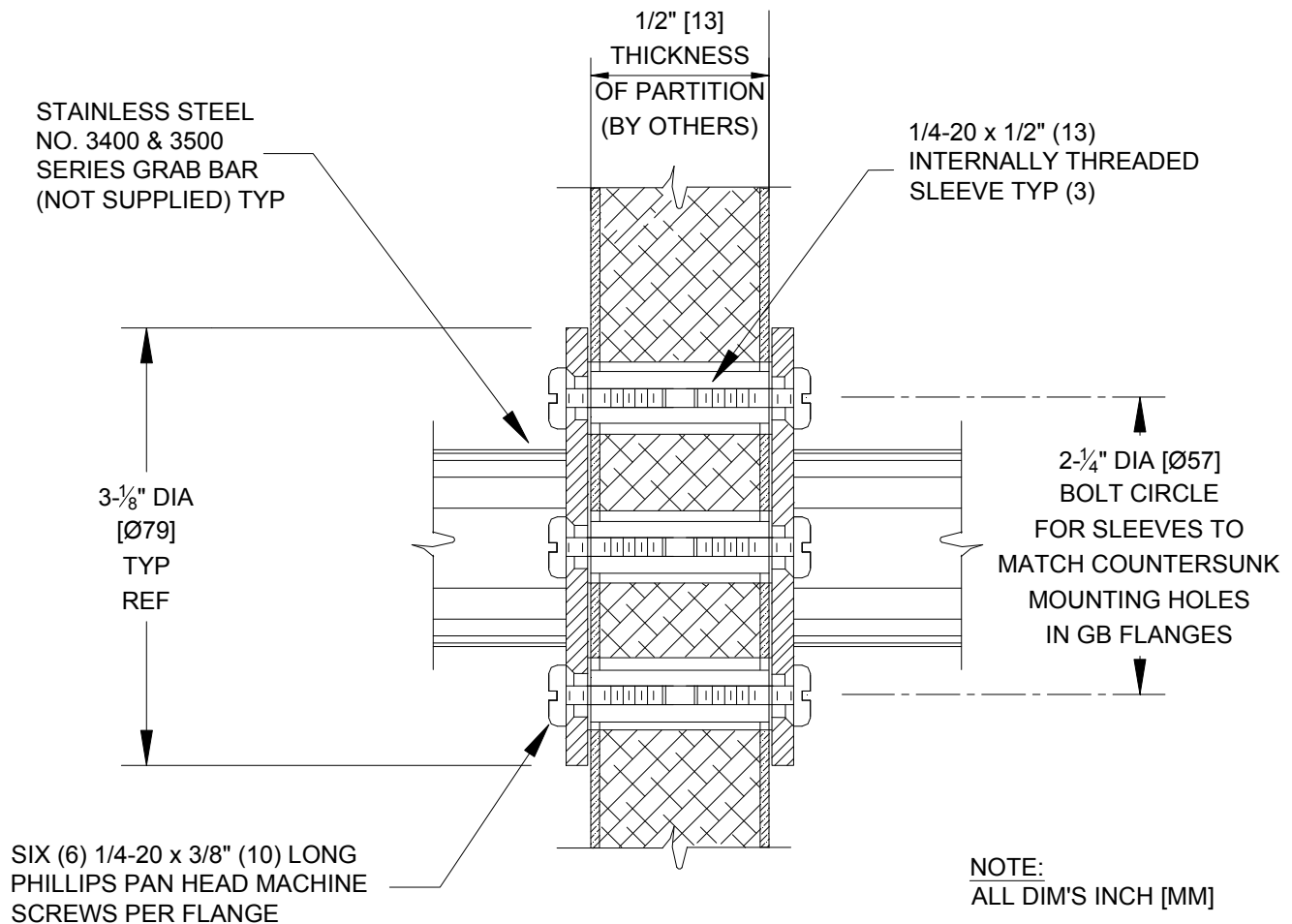


MODEL №: 3924

ISSUED: 1-87

REVISED: 17 Jan 2013

ANCHOR FOR BACK-TO-BACK EXPOSED MOUNTED GRAB BARS



SPECIFICATION

Anchor for Back-to-Back Exposed Mounted Grab Bars (Model 3400 and 3500) on 1/2" (13) thick Metal Partition, shall be 1/4-20 x 1/2" (13) long internally threaded sleeves with 1/4-20 x 3/8" (10) long Phillips or slotted pan head machine screws. Anchor kit shall contain three (3) sleeves and six (6) machine screws. Specify one (1) kit per flange.

Anchor for Metal Partition Back-to-Back Mounted Grab Bars shall be Model № 3924 of American Specialties, Inc., 441 Saw Mill River Road, Yonkers, NY 10701-4913

INSTALLATION

For compliance with 2010 ADA Accessibility Standards, mount grab bar so that top is 33" (838) minimum to 36" (914) maximum above finished floor, unless lower code applies. Locate grab bar in exact mounting position on both sides of suitably reinforced partition, and transfer centerlines of flange mounting holes onto partition. Drill 3/8" Diameter (Ø10) holes through partition at those marks. Insert machine screws through grab bar and install sleeves. Install this assembly onto partition and from other side install other grab bar with remaining machine screws.