

406 - RAZORBACK™ W/DYNA-SHIELD®

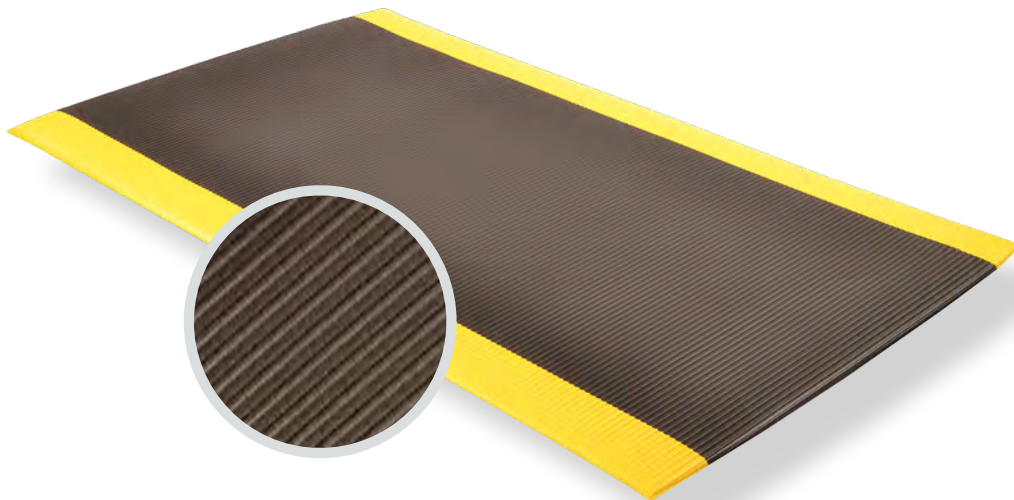
PRODUCT INFORMATION BROCHURE





For over 70 years, the name Notrax® has meant superior quality, service, and innovative products. Now this brand is a cornerstone of Justrite Safety Group, offering the widest selection of products to a variety of markets and applications including entrance mats, anti-fatigue/safety mats, and products designed specifically for use in professional food service environments. Notrax® offers a complete selection of floor matting options to meet any application requirement, quality expectation, and budget.

- **Track record of manufacturing high quality mats for over seventy years**
- **All products are manufactured in ISO certified facilities**
- **Notrax® offers anti-fatigue matting, entrance matting, safety matting, food service matting and specialty mats designed for a variety of industries**



406 - RAZORBACK™ W/DYNA-SHIELD® is an anti-fatigue mat that is designed to provide traction with its wide ribs that run from side-to-side allowing for sure footing and is easy to sweep clean. The NoTrax® exclusive Dyna-Shield® PVC sponge is manufactured with a tough protective top layer that provides long lasting wear and outperforms in tear resistance and tensile strength. Designed for use in medium duty dry work areas.

Material: PVC

Features and Benefits:

- Wide ribs that run from the side to side of the mat
- PVC foam provides added cushioning comfort
- Exclusive Dyna-Shield® top surface manufactured directly into the mat for long lasting wear.
- Superior tear resistance and tensile strength
- Beveled edges on all 4 sides of all stock, cuts and rolls
- Max length available up to 120 linear feet (minimum 2 rolls , available in increments of 2)
- Tolerances available upon request



MODEL: 406

SPECIFICATIONS

APPLICATIONS

- Dry Workstations
- Assembly Lines
- Packaging Areas
- Service Counters

| | |
|-------------|--|
| Stock Sizes | 2'x3', 2'x6', 3'x4', 3'x5', 3'x6', 3'x12' |
| Roll Sizes | 2'x60', 3'x60', 4'x60' |
| Thickness | 1/2" |
| Cut Lengths | 2', 3', and 4' widths (up to 60' long) |
| Colors | <div style="display: flex; justify-content: space-around; align-items: center;"> <div style="text-align: center;">  <p>Black</p> </div> <div style="text-align: center;">  <p>Black/Yellow</p> </div> </div> |

| Performance: | Good | Better | Best | Superior |
|--------------------------|------------|------------|------------|------------|
| Wear Resistance | ██████████ | ██████████ | ██████████ | ██████████ |
| Anti-fatigue Performance | ██████████ | ██████████ | ██████████ | ██████████ |
| Slip Resistance | ██████████ | ██████████ | ██████████ | ██████████ |



Anti-Fatigue



Cut Lengths



Insulation



TESTING DATA

| Test | Test Description | Results |
|--------------------|--|--|
| - | Compression Deflection | @ 20 lbs./in2: 0.449 in. @ 40 lbs./in2: 0.626 in. |
| ATSM D3884-01 | Abrasion Resistance (Measured in weight loss) | @500 cycles: 1.44 Grams (4.1%) @1000 cycles: 7.62 Grams (21.9%) |
| ASTM C-1028 | Static Coefficient of Friction | Dry: 0.83 Wet: 0.79 |
| ASTM D-1004-94a-03 | Tear Resistance (Measured in lbs.) | 15.0 lbs. |
| ASTM D-412 | Breaking Load & Elongation (Avg.) | Breaking Load: 28.5lbs./in2 Elongation: 74% |

*Testing performed by an independent test laboratory.

